

Confocal Application Notes

Vol. 5 February 2007



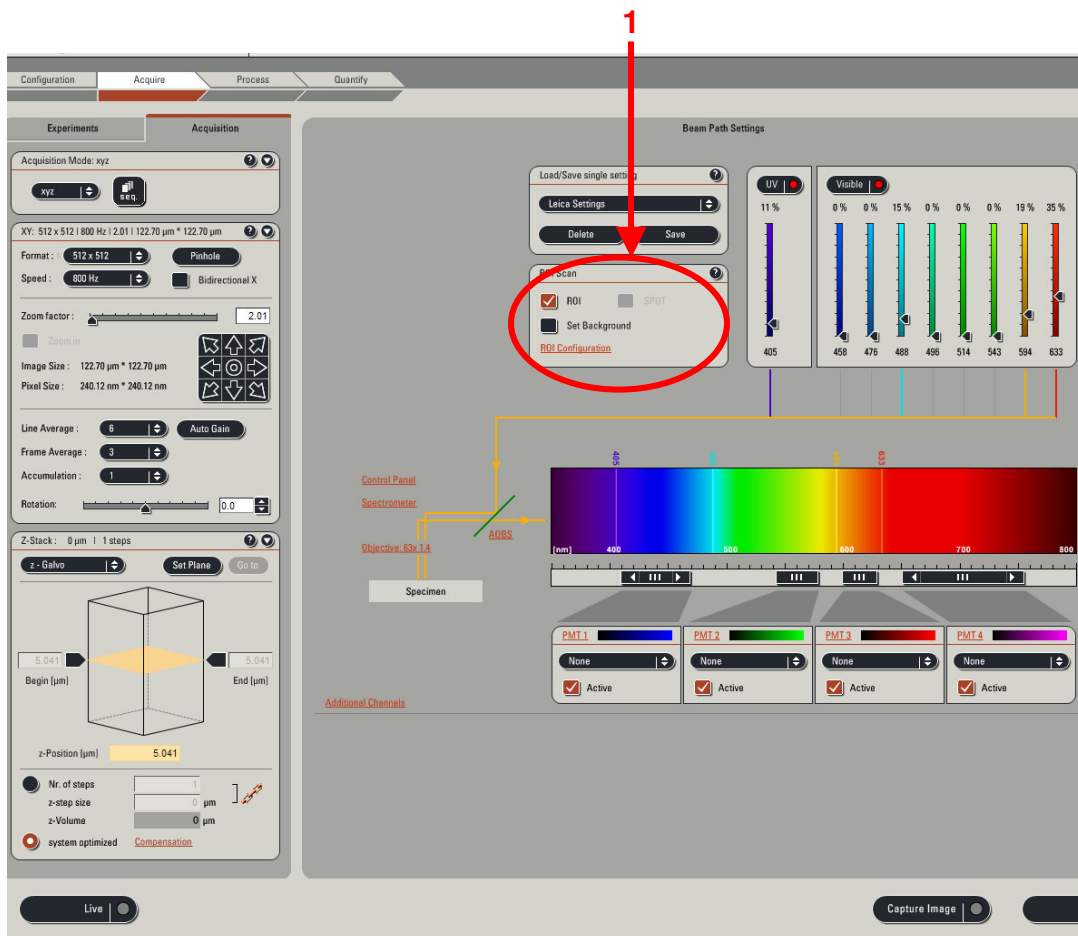
Region of interest (ROI) Scan

Prepared by Myriam Gastard, Ph.D.
Application and Technology Support Group

In this Application Notes, we are going to describe how to use the ROI scan function. This tool, in association with the ROI drawing functions described last month, allow you to scan in a defined region of interest, and, if needed, to scan only the defined ROI, eliminating the outside area, and overexposure of your sample by setting the background to zero.

The ROI scan tools are accessible directly from the acquisition screen. Once your lasers, PMTs, gains and Offsets are setup, just follow the step by step described below.

1. Activate the ROI scan in the acquisition window.

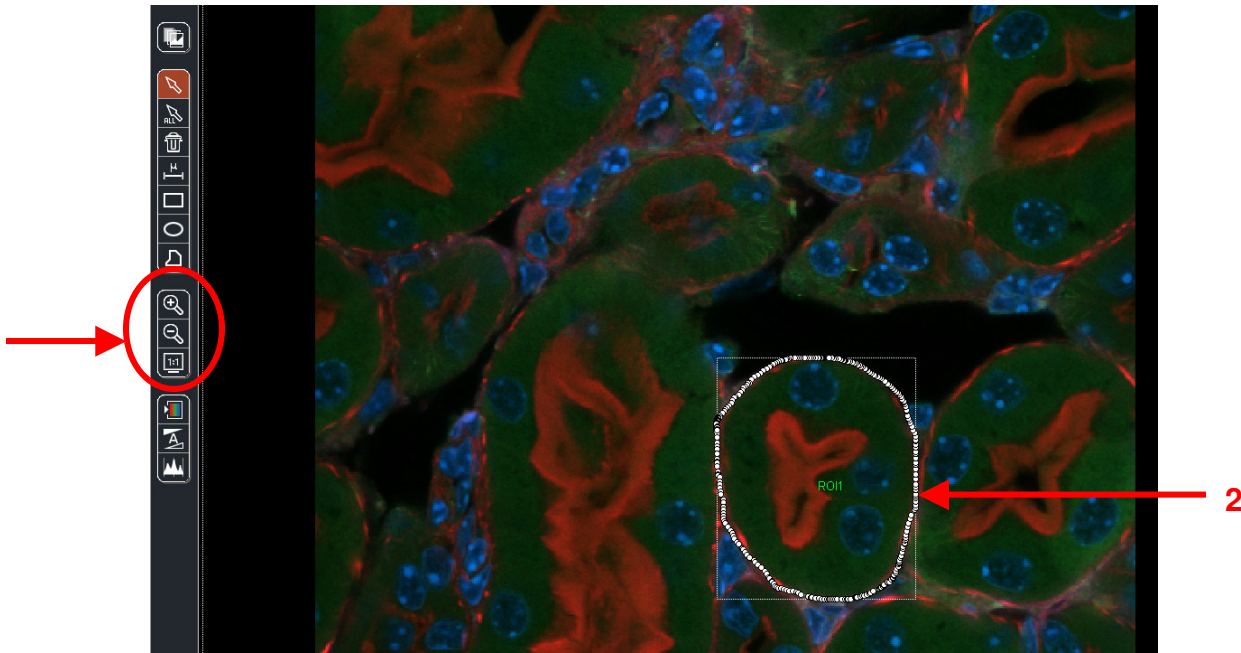


Confocal Application Notes

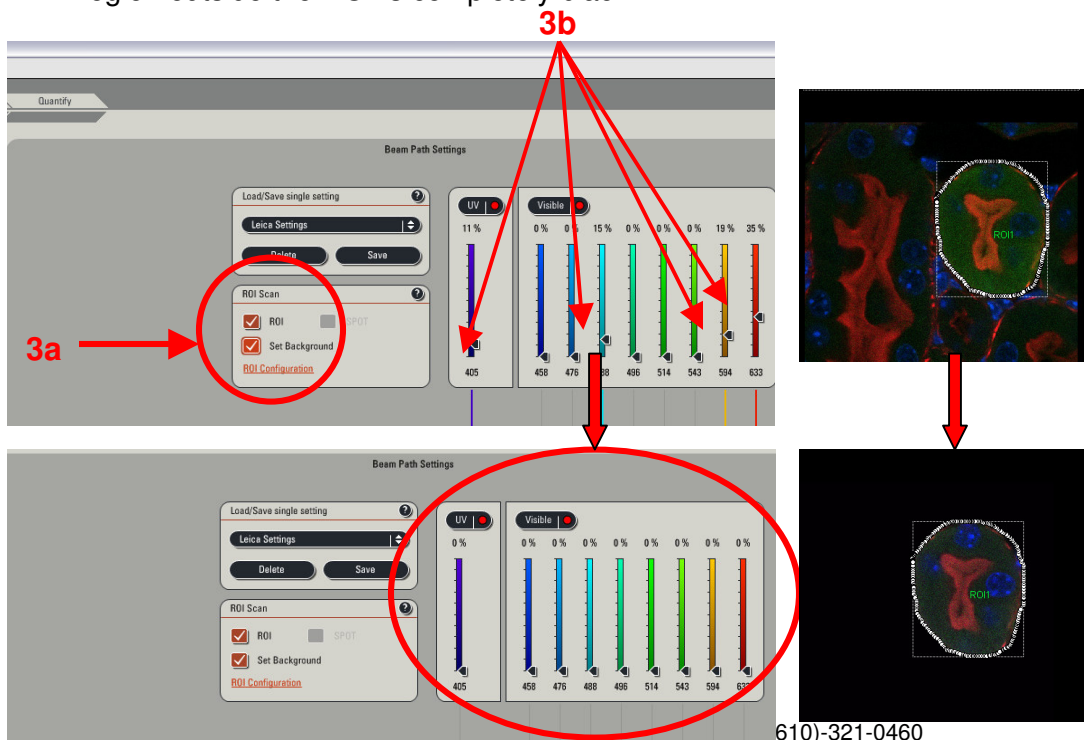
Vol. 5 February 2007



2. Draw the ROI using any drawing tools on the left inside of the viewing screen.



3. **a)** Activate the ROI background button, and **b)** reduce the power laser(s) until the region outside the ROI is completely black.



410 Eagleview Blvd, Ste. 107
Exton, PA 19341

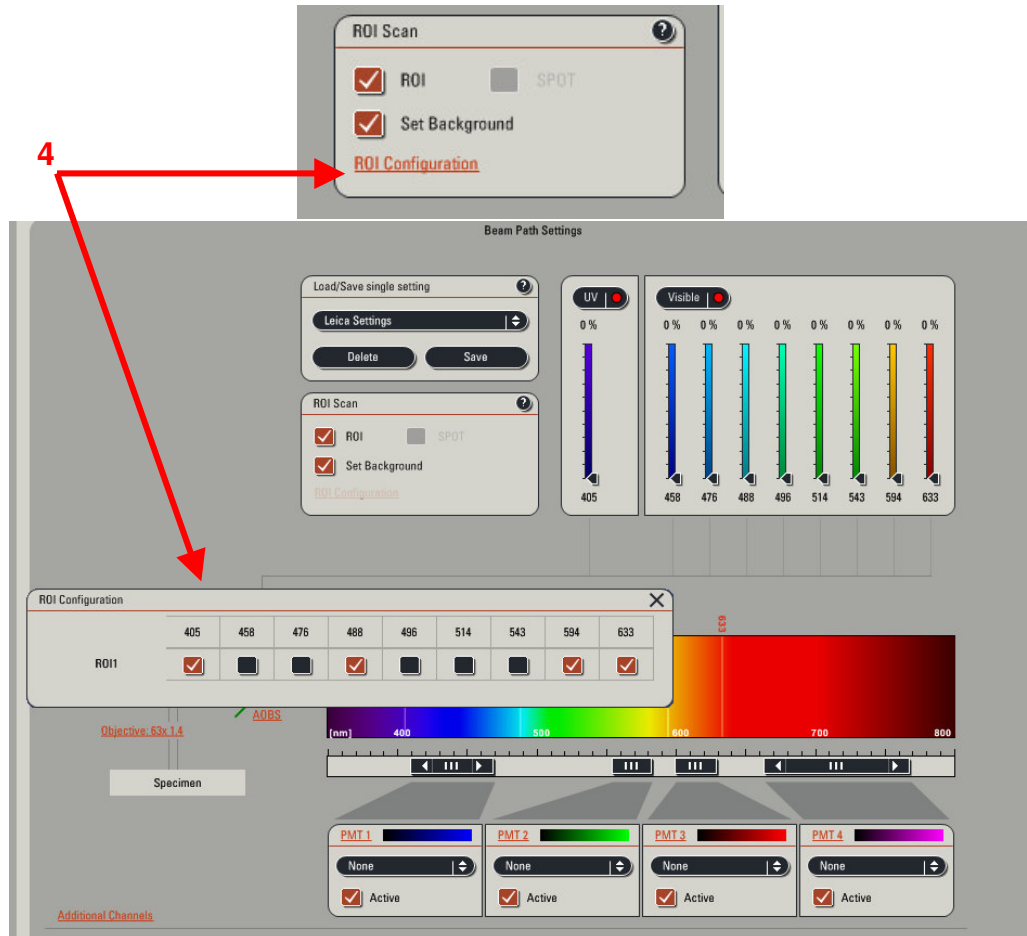
610)-321-0460
Toll Free 866-830-0735
Fax (610)-321-0425
www.confocal-microscopy.com

Confocal Application Notes

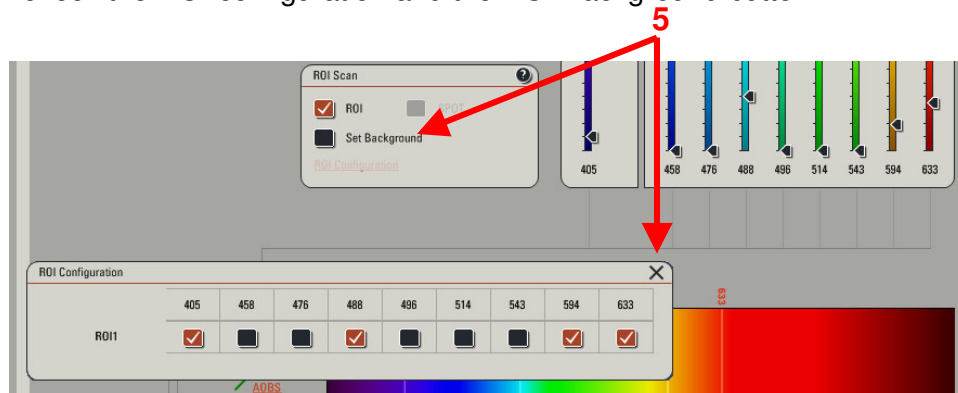
Vol. 5 February 2007



4. Check the ROI configuration to confirm the activated laser lines.



5. Uncheck the ROI configuration and the ROI Background button.



PS: Once the ROI background box is unchecked, the power in the laser lines will go back at their original values established for the ROI scan.

Confocal Application Notes

Vol. 5 February 2007



6. Click on Capture Image.

